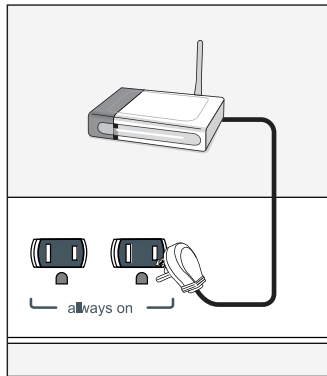


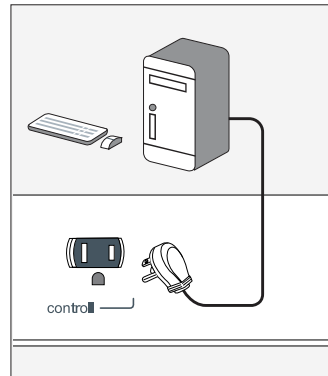
## ADVANCED POWERSTRIP

Your Advanced PowerStrip saves energy by reducing the amount of standby power wasted by home AV systems and desktop PCs. Follow these step-by-step instructions when installing your TrickleStar 7-outlet Advanced PowerStrip:



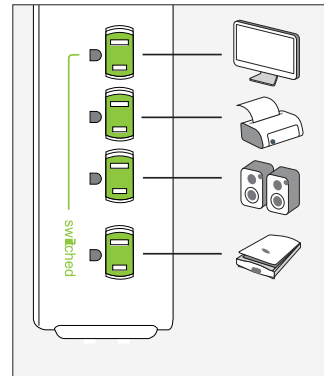
### STEP 1

Plug electronics that require constant power into the outlets on the power strip labeled "always on" (e.g., router/modem or DVR/TiVo).



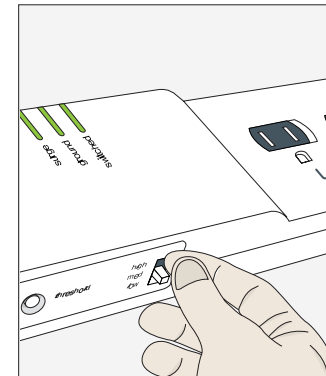
### STEP 2

Plug in main component (either TV or computer) to the "control" outlet.



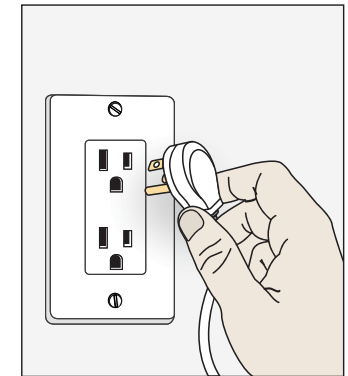
### STEP 3

Plug peripheral electronics into the "switched" outlets on the power strip labeled "switched" (e.g., printer, scanner, speakers, receiver, amp, game console).



### STEP 4

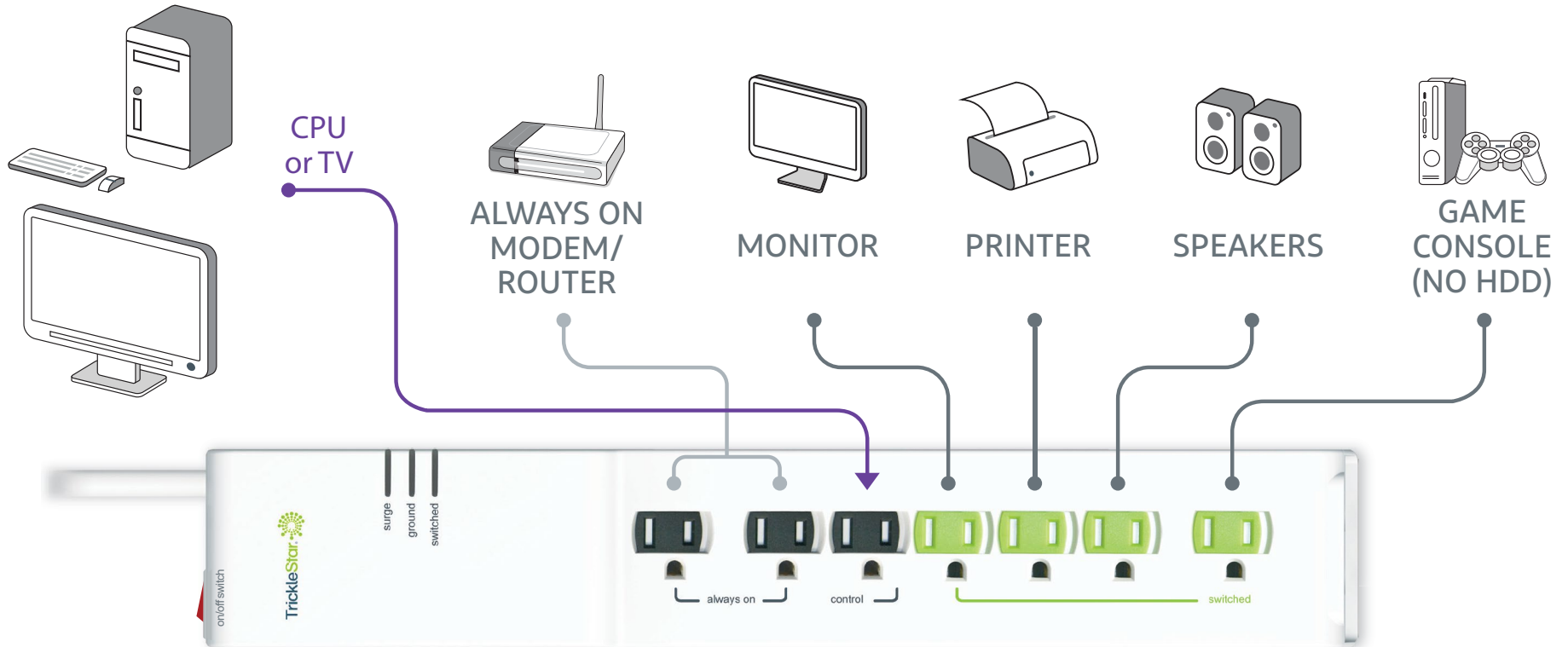
Adjust the selectable threshold switch to "low" or "med" for notebooks or desktop computers and "med" or "high" for TV components.



### STEP 5

Plug the power strip into a grounded wall receptacle.

## ADVANCED POWERSTRIP



For questions or support, visit [TrickleStar.com](https://TrickleStar.com) or call TrickleStar at 1-888-700-1098.

1. Do not plug space heaters into your new TrickleStar Advanced PowerStrip.
2. Do not use your TrickleStar Advanced PowerStrip in a moisture-rich environment or expose it to excessive moisture.

© Commonwealth Edison Company, 2024  
The ComEd Energy Efficiency Program is funded in compliance with state law.  
Terms and conditions apply.